

# Speed Controller: Standard Type Elbow Type (Metal Body)

## AS Series

RoHS

### Minimizes installation time and cost

Fittings and tubing are not necessary because this type screws directly into the actuator. Thus, piping labor and cost can be eliminated.

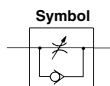
### Body swivels 360°

Swivel type allows free setting of piping.

### Speed may be accurately controlled even at low speeds.

### Able to control and set a constant speed easily.

### Retainer prevents accidental loss of needle.



### Made to Order

(For details, refer to page 647.)

Symbol	Specifications
-X12	Lubricant: Vaseline
-X21	Grease-free (Seal: Fluorine-coated) + Throttle valve (Without check valve)
-X214	Throttle valve (Without check valve)

### Specifications

Specifications	Model	AS1200-M3	AS1400-M3	AS1200-M5	AS1200-U10/32	AS2200-01	AS2200-02	AS3200-03	AS4200-04
Port size		M3 x 0.5	M5 x 0.8	10-32 UNF	1/8	1/4	3/8	1/2	
Fluid		Air							
Proof pressure		1.05 MPa				1.5 MPa			
Max. operating pressure		0.7 MPa				1 MPa			
Min. operating pressure		0.1 MPa				0.1 MPa			
Ambient and fluid temperature		-5 to 60°C (No freezing)							
Option		—	Round lock nut	With seal, Round lock nut, Nickel plated					
Weight (g)		3	6	10	29	64	106	181	
Controlled flow	Flow rate L/min (ANR)	20	105	230	460	920	1700		
Free flow	Sonic conductance dm <sup>3</sup> /s(bar)	0.06	0.32	0.7	1.4	2.8	5.2		
Critical pressure ratio	Controlled flow	0.2	0.2	0.25	0.3	0.25	0.25		
	Free flow	0.4	0.4	0.2	0.3	0.2	0.3		

Note 1) Flow rate values are measured at 0.5 MPa and 20°C.

Note 2) Meter-in type not available on AS1200-M3, AS1400-M3.

Note 3) Distinction between meter-out/meter-in types by appearance.

Those are distinguished by the lock nut. The meter-out type is zinc chromated (the round lock nut is electroless nickel plated), while the meter-in type is black zinc chromate plated.

Note 4) AS1200, AS1400, AS2200, AS3200: Brass parts are electroless nickel plated, provided as standard. (N specifications)

### How to Order

AS 2 2 0 0 - 01 - S - - -

#### Body size

1	M3, M5 standard
2	1/8, 1/4 standard
3	3/8 standard
4	1/2 standard

#### Type

2	Direct cylinder elbow type
4	Direct cylinder flat elbow type

#### Control type

0	Meter-out
1	Meter-in

#### Thread type

Symbol	Cylinder side	Tube side
Nil	R	Rc
	Metric thread (M3, M5)	
	Unified thread (10-32 UNF)	
N	NPT	
F	G *	

\* Male thread comes with R thread.

Made to Order  
Refer to page 647 for details.

#### Lock nut option

Nil	Hexagon lock nut
J	Round lock nut

#### Option

Nil	None
S	With seal
N	Electroless nickel plated

\* If more than one option is required, write option part numbers in the order of "S", "N".

Note) M3 and M5 sizes: s (with seal) is not necessary.

#### Bore size

Symbol	Bore size	Applicable series
M3	M3 x 0.5	AS1200-M3 AS1400-M3
M5	M5 x 0.8	AS1200-M5
U10/32	10-32 UNF	AS1200-U10/32
01	1/8	AS2200-01
02	1/4	AS2200-02
03	3/8	AS3200-03
04	1/2	AS4200-04