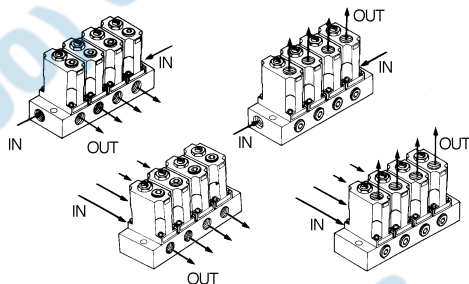


4 Ways of Connection

Small Size Pressure Gauge
ø15mmReverse flow function available
on the standard model

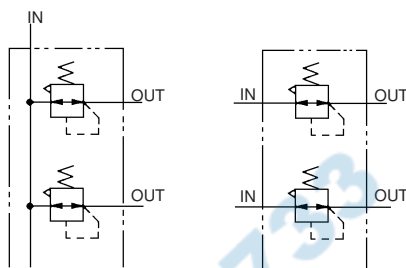
Space Saving



Symbol

Common IN

Individual IN



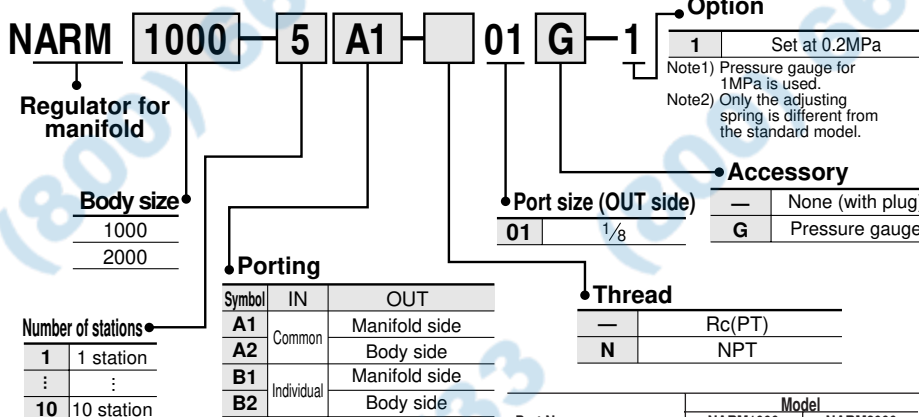
Standard Specifications

Fluid	Air
Proof pressure psig (MPa)	175 (1.2)
Max. operating pressure psig (MPa)	120 (0.8)
Set pressure range psig (MPa)	7~100 (0.05 to 0.7)
Ambient and fluid temperature	23°~140°F (–5 to 60°C) (No freezing)
Fluid	Air
Cracking pressure (Valve) psig (MPa)	3 (0.02)
Construction	Relief style

Port size/Weight

Model	Porting	Port size		Weight lb (g)	
		IN	OUT	Total weight (n: stations)	Regulator (Except manifold)
NARM1000	Common IN	1/8	1/8	(80 X n) + 23	.13 (57)
	Individual IN	1/8	1/8	(79 X n) + 25	
NARM2000	Common IN	1/4	1/8	(188 X n) + 43	.3 (136)
	Individual IN	1/8	1/8	(187 X n) + 45	

How to Order



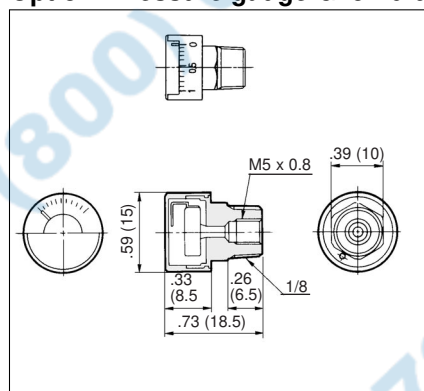
Note1) In case of A1 and B1, a pressure gauge or a plug is mounted at the body side, while in case of A2 and B2, at the manifold side.

Note2) Pressure gauges mounted in body are oriented so that the 6 o'clock position of the gauge is at the pressure adjusting screw.

Part Name	Model	
	NARM1000	NARM2000
Regulator w/o mflid	NARM1000A	NARM2000A
Pressure gauge	G15-P10-N01	G15-P10-N01
Blanking plate kit (plate, screws, and o-ring)	136114A	136214A
Manifold base, Common IN (A1, A2)	13612-*N	13622-*N
Manifold base, Individual IN (B1, B2)	13613-*N	13623-*N

* Denotes number of stations: 2~10 available.

Option: Pressure gauge G15-10-01



•Precautions:

How to Order

G15 – P10 – 01

Units

Nil	MPa
P	PSI

Max. pressure indication

10	150PSI (1.0MPa)
----	-----------------

*Pressure gauge for 30psig (0.2MPa) is not available. Please use gauge for 150psi (1.0MPa).

Kind of connecting thread

01	1/8 male thread, M5 female thread
----	-----------------------------------

Thread

—	Rc(PT)
N	NPT