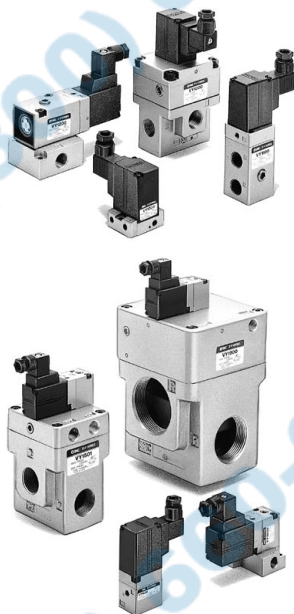
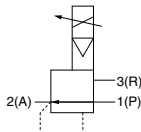


E-P HYREG® VY1 Series

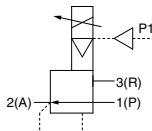


Symbol

Internal pilot



External pilot



How to Order

E-P HYREG
Maximum operating
pressure: 0.9 MPa

Made to Order

X39 Low wattage specification P.1003

Pilot type

0	Internal pilot
1	External pilot <small>Note 1)</small>

Note 1) Except body size D

VY1 1 0 0 - 01 - - -

Power source/Command signal

Symbol	Power source voltage DC	Command signal DC	Input impedance
Nil			
1	24 V	1 to 5 V	67 kΩ
2		0 to 10V	10 kΩ
3		4 to 20 mA	120 Ω
5	12 V	1 to 5 V	67 kΩ
6		0 to 10 V	10 kΩ
7		4 to 20 mA	120 Ω
8		0 to 20 mA	120 Ω

Thread type

Nil	Rc
F	G ⁽²⁾
N	NPT
T	NPTF

Note 2) Not conforming to ISO1179-1.

Body size

Port size Rc

Option

Mounting	Symbol	Symbol	Port 1(P), 2(A)	Port 3(R)	B (Bracket)	F (Foot)	G (Pressure gauge)	N (Silencer)	Applicable pilot valve ^{*)}
Base mounted	D	00	Without sub-plate	—	—	—	—	—	VY1D00-□00 ⁽⁵⁾
		M5	M5	—	—	—	—	—	
		01	Without sub-plate	—	—	—	—	—	
	B	M5	M5	—	—	—	—	—	
		01	1/8	—	—	—	—	—	
		02	Without sub-plate	—	—	—	—	—	
	2	01	1/8	—	—	—	—	—	
		02	1/4	—	—	—	—	—	
		03	Without sub-plate	—	—	—	—	—	
	4	02	1/4	—	—	—	—	—	
		03	3/8	—	—	—	—	—	
		04	1/2	—	—	—	—	—	
Body ported	A	M5	M5	● ⁽³⁾	● ⁽³⁾	—	—	—	VY1B00-□00 ⁽⁵⁾
		01	1/8	● ⁽³⁾	● ⁽³⁾	—	—	—	
		02	1/4	—	—	—	—	—	
	3	02	1/4	—	—	—	—	—	
		03	3/8	—	—	—	—	—	
		04	1/2	—	—	—	—	—	
	5	06	3/4	—	—	—	—	—	
		10	1	—	—	—	—	—	
		10	1	—	—	—	—	—	
	7	12	1 1/4	—	—	—	—	—	
		14	1 1/2	—	—	—	—	—	
		20	2	—	—	—	—	—	

Note 3) Only bracket or foot may be mounted.

Note 4) When replacing the pilot valve, it may not satisfy characteristics such as accuracy, etc. Confirm the product works under the operating conditions before using. If SMC is requested to repair the product, SMC confirms whether characteristics are satisfied.

Note 5) □ in the applicable pilot valve part number is designated for the power source/command signal.

Note 6) Cut off the command signal when the pressure control on the outlet side is not required, such as when the line is temporarily halted, etc. Refer to Specific Product Precautions on page 1006.